

LACIE DEVICE UPDATER FLASH FIRMWARE INSTRUCTIONS

LaCie Device Updater Install v4.0.5 contains the latest configuration ROM and firmware updates for LaCie d2 and Design by F.A. Porsche DVD+/-RW Double Layer drives with LightScribe. Windows 2000 or XP systems required for proper operations.

Latest version fixes communication errors with LaCie DVD+/-RW Double Layer drives with LightScribe and Roxio Labeler (bundled with Easy Media Creator 7) and SureThing CD/DVD Labeler when burning a graphic image onto a LightScribe media disc.

IMPORTANT! Before using the LaCie Device Updater flash utility, please make sure all external FireWire and USB drives are disconnected and powered off from your Windows PC system.

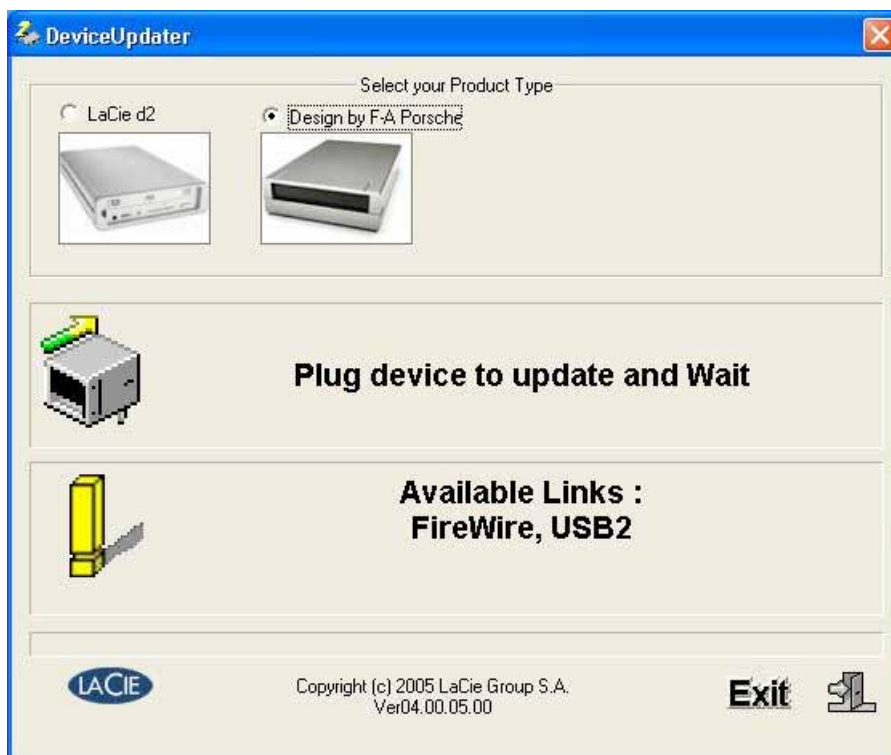
STEP 1: Unzip the "DeviceUpdater_xxxx.zip" file. Either Run or double-click the "DeviceUpdater_Install.exe" executable. Once installed, you will be asked to reboot your Windows PC. Please do so.

STEP 2: After your PC has rebooted, you will find the "LaCie Device Updater" flash utility icon on your Windows desktop (see Fig. A). Double-click it to launch the Device Updater flash utility and select your LaCie product type (see Fig. B). This will ensure the drive is flashed with the latest and appropriate firmware.

Fig A.



Fig B.



STEP 3: Connect the LaCie FireWire or USB drive to your Windows PC FireWire (IEEE 1394) or USB 1.1/2.0 port and power on the drive. **IMPORTANT!** You can only update one drive at a time. DO NOT have any other external FireWire or USB drives connected, other than the drive you want to update. For FireWire drives, if one FireWire port fails to be read, try the other FireWire port on the FireWire drive.

If your drive firmware requires updating, the Device Updater will prompt "Device Found" and "Please Wait". **WARNING!** Do not interrupt the flash updating process; doing so can damage your drive. Please wait until the firmware process is completed. This can take a few minutes. Once update is completed, power off your drive and exit the Device Updater flash utility.



If your drive has the latest firmware, the Device Updater will prompt "Your Device has already up to date!" and "Unplug device". Power off the FireWire or USB drive and Exit the Device Updater flash utility.

