



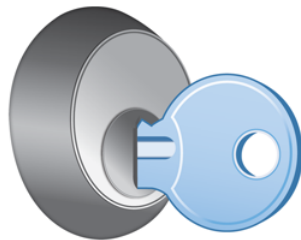
Made for ideas.

LACIE PC/MAC LOCK USER MANUAL



[CLICK **HERE** TO ACCESS **UP-TO-DATE ONLINE VERSION**](#)

of this document for the most recent content as well as for features such as expandable illustrations, easier navigation, and search capability.



INTRODUCTION



With LaCie PC/Mac® Lock software, it's easy to keep all your files safe and secure—simply by using the LaCie USB key that you already own. PC/Mac Lock allows you to log on and off your computer simply by inserting a USB key. That's it!

Refer to [Installation](#) and [Using PC/Mac Lock](#) for setup and usage information. If you encounter problems or have questions, refer to [Frequently Asked Questions](#).

SUPPORTED OPERATING SYSTEMS

- Windows 7, Windows 7 x64 (64-bit) edition
- Windows Vista, Windows Vista x64 (64-bit) edition
- Windows XP, Windows XP x64 (64-bit) edition
- Windows Server 2008, Windows Server 2008 x64 (64-bit) edition
- Windows Server 2003, Windows Server 2003 x64 (64-bit) edition
- Mac OS X 10.6 Snow Leopard
- Mac OS X 10.5 Leopard

Important info: LaCie PC/Mac Lock is compatible with all LaCie USB keys **except** the LabelKey, MosKeyto, and PetiteKey.

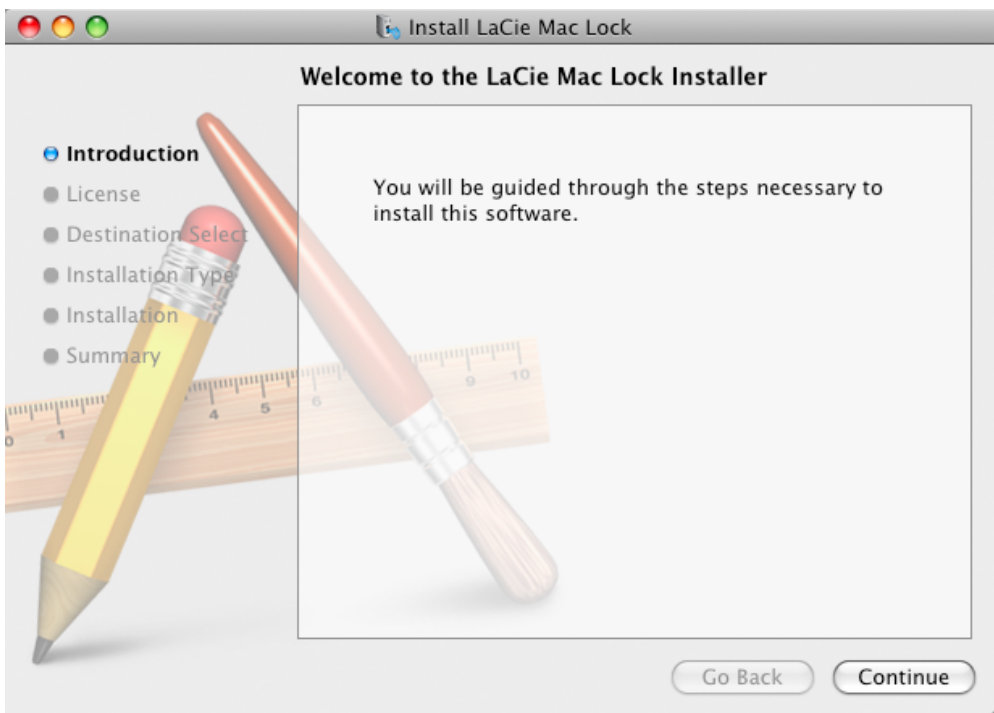
INSTALLATION

MAC USERS

1. If you already have the software, skip to step 3. Otherwise, download the software from the LaCie [website](#).
2. Navigate to your downloads folder.
3. Double-click the LaCie Mac Lock dmg file.
4. Double-click the LaCie Mac Lock pkg file to launch the installer.



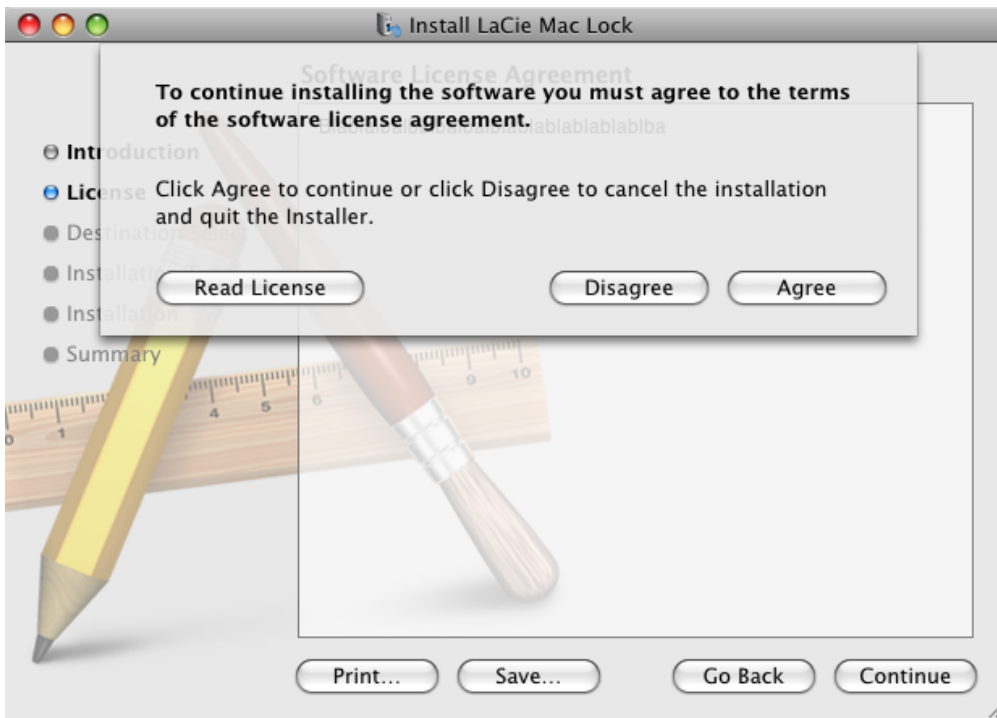
5. Click **Continue**.



6. In the next screen, choose the disk where Mac OS is installed on your computer, and click **Continue**.



7. In the next screen, agree to the software license in order to continue.



8. In the next screen, click **Install**.



9. Type your administrator password. The software will be installed.

10. When the installation is finished, click **Restart** to reboot your computer.

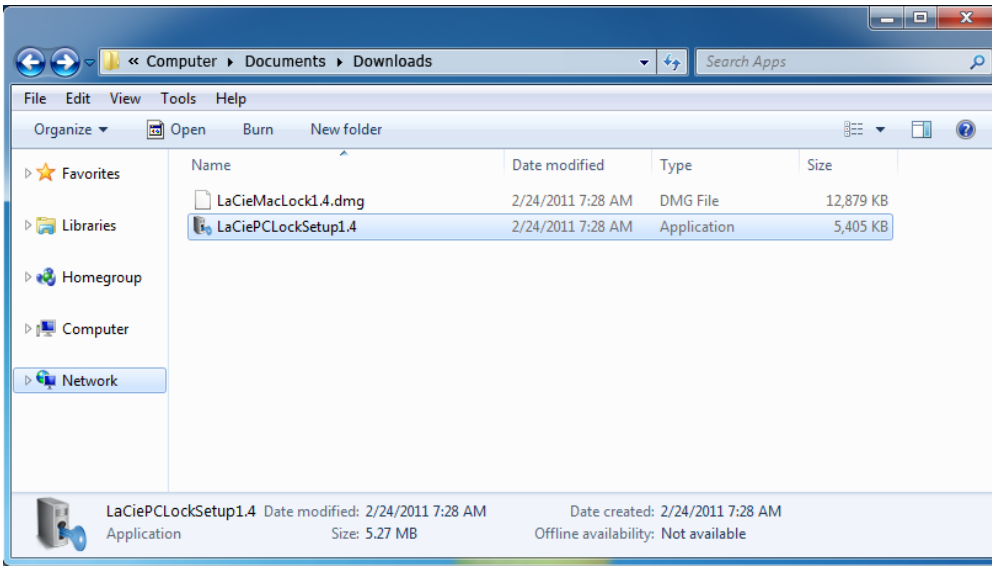


11. Move on to the next chapter, [Using PC/Mac Lock](#).

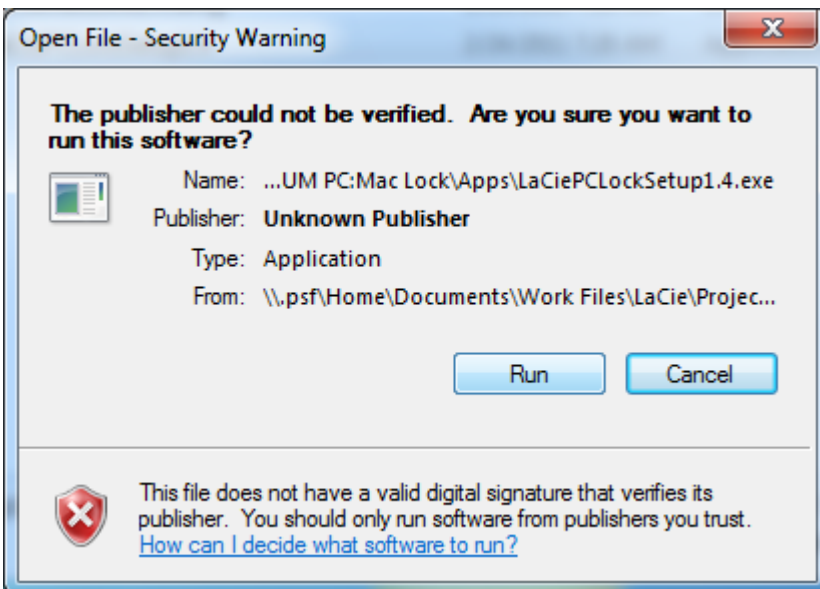
Important info: Mac users must restart their computer after installation or the software may not function correctly.

WINDOWS 7 AND VISTA USERS

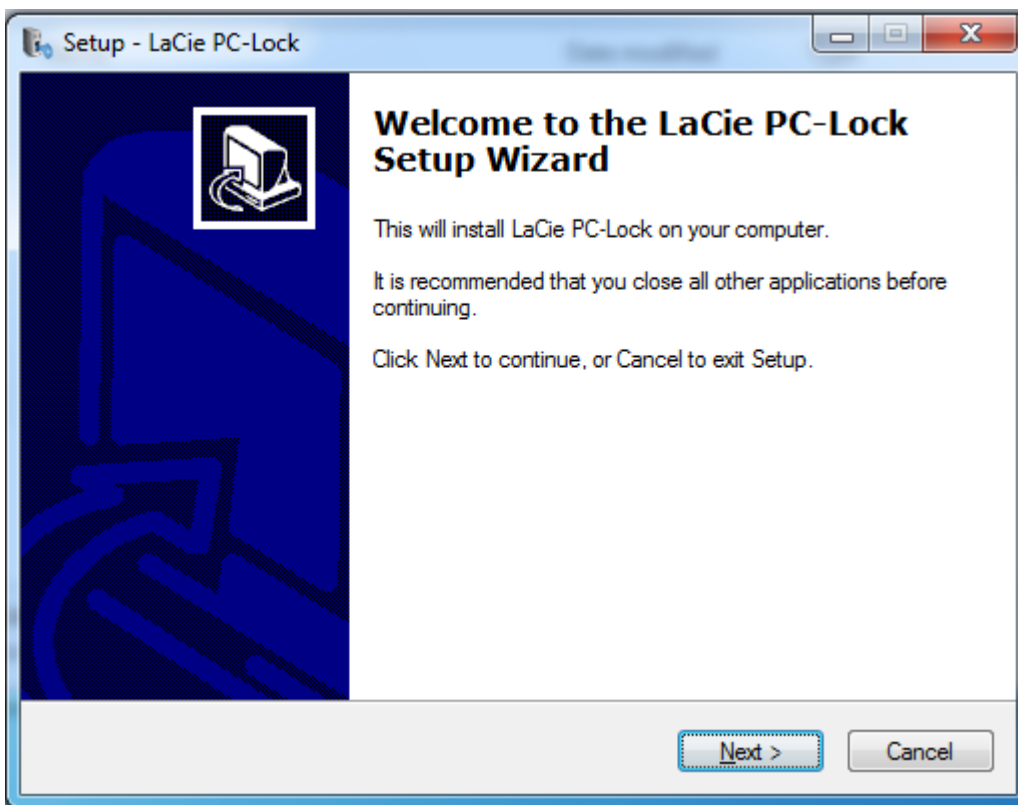
1. If you already have the software, skip to step 3. Otherwise, download the software from the LaCie [website](#).
2. Navigate to your downloads folder.
3. Double-click the LaCie PC Lock Setup exe file.



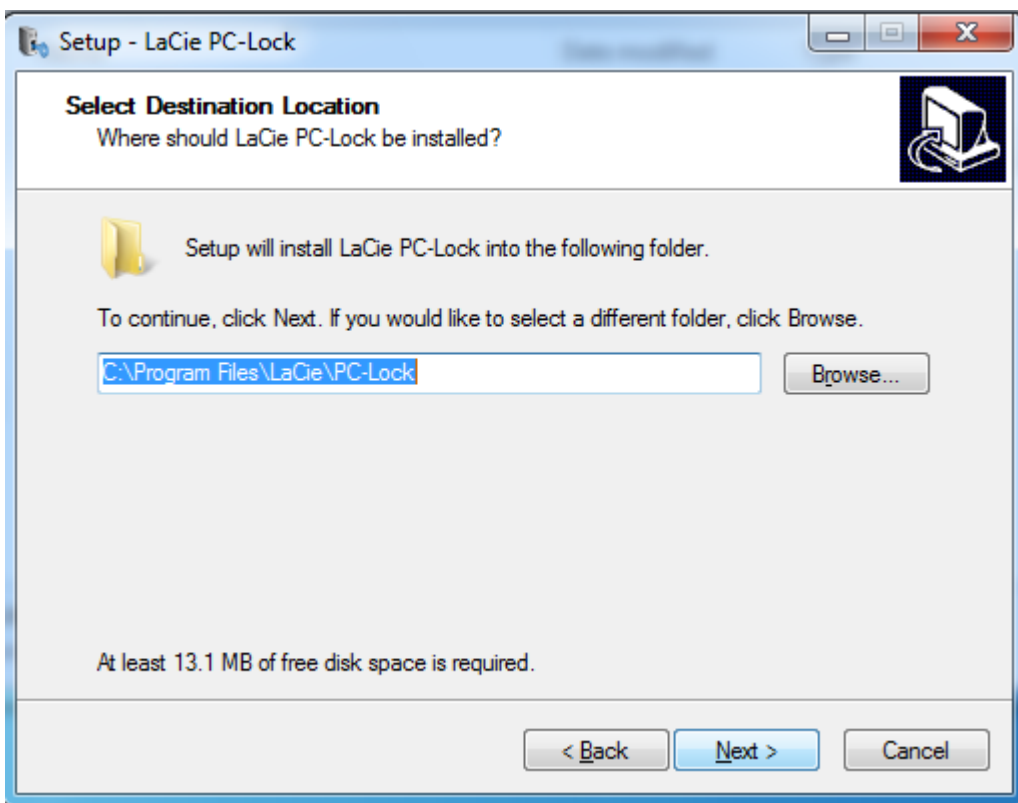
4. If a security warning is displayed, click **Run** to continue installation.



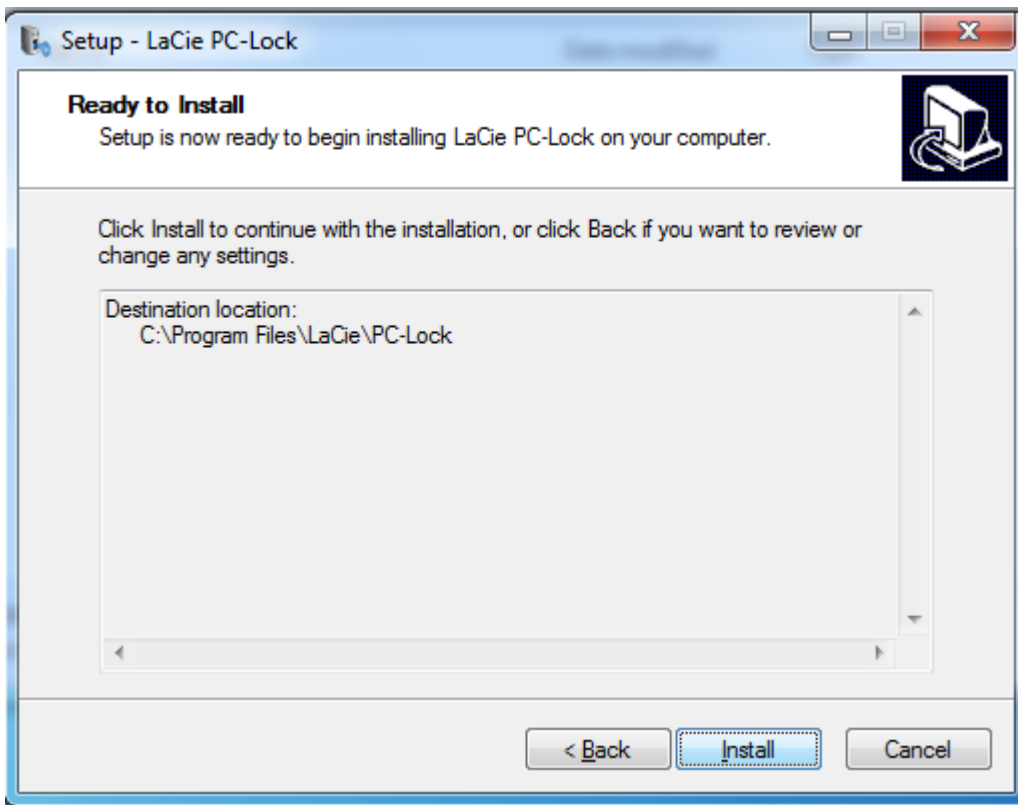
5. In the next screen, click **Next**.



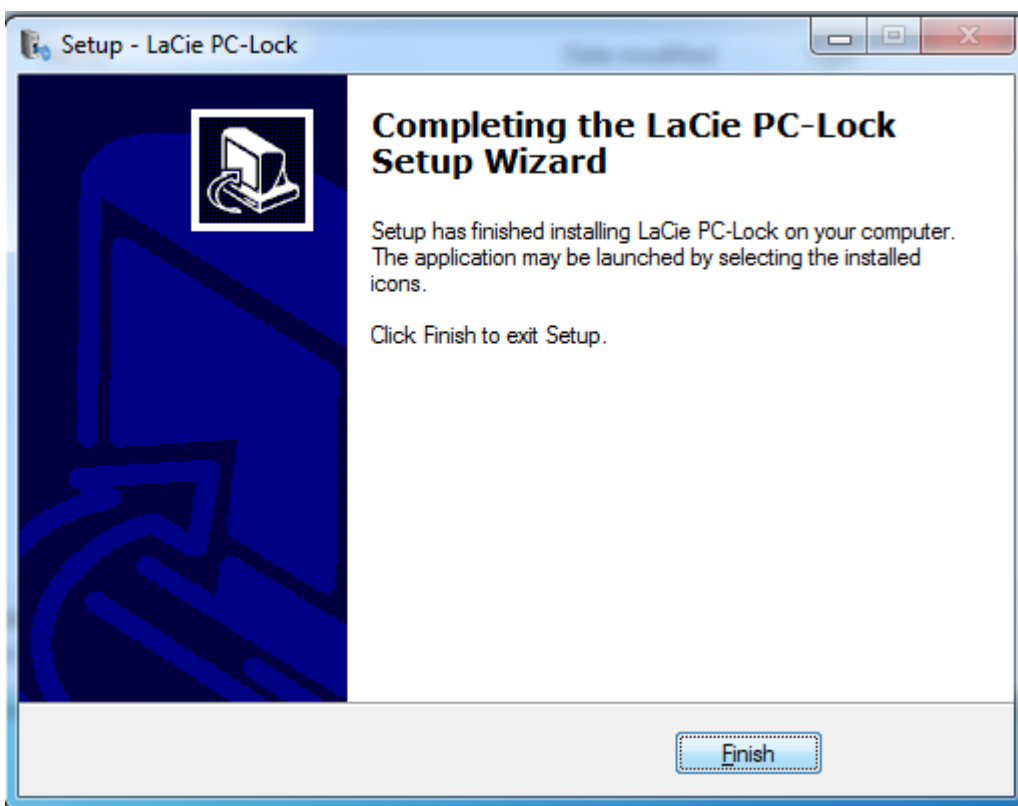
6. In the next screen, agree to the software license in order to continue.
7. In the next screen, choose where you wish to install the software, and click **Next**.



8. In the next screen, click **Install**.



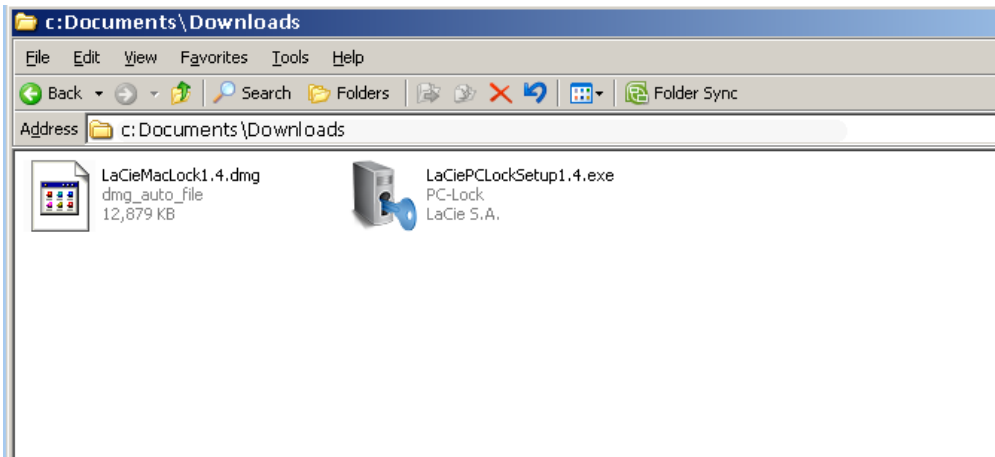
9. In the next screen, click **Finish**.



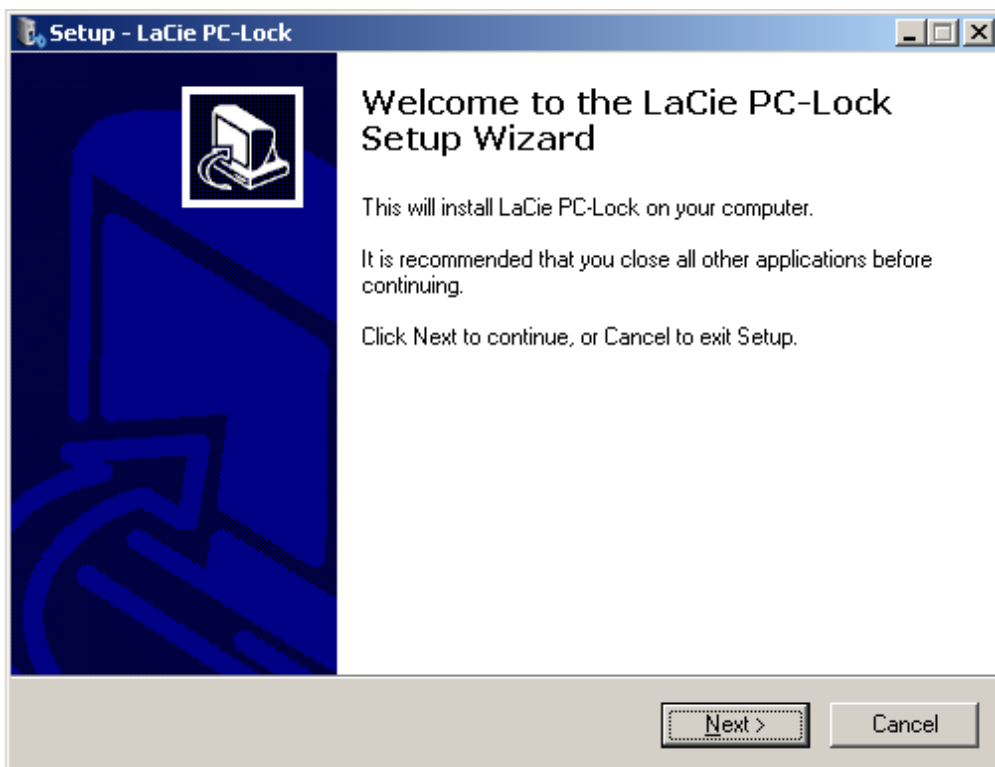
10. Move on to the next chapter, [Using PC/Mac Lock](#).

WINDOWS XP USERS

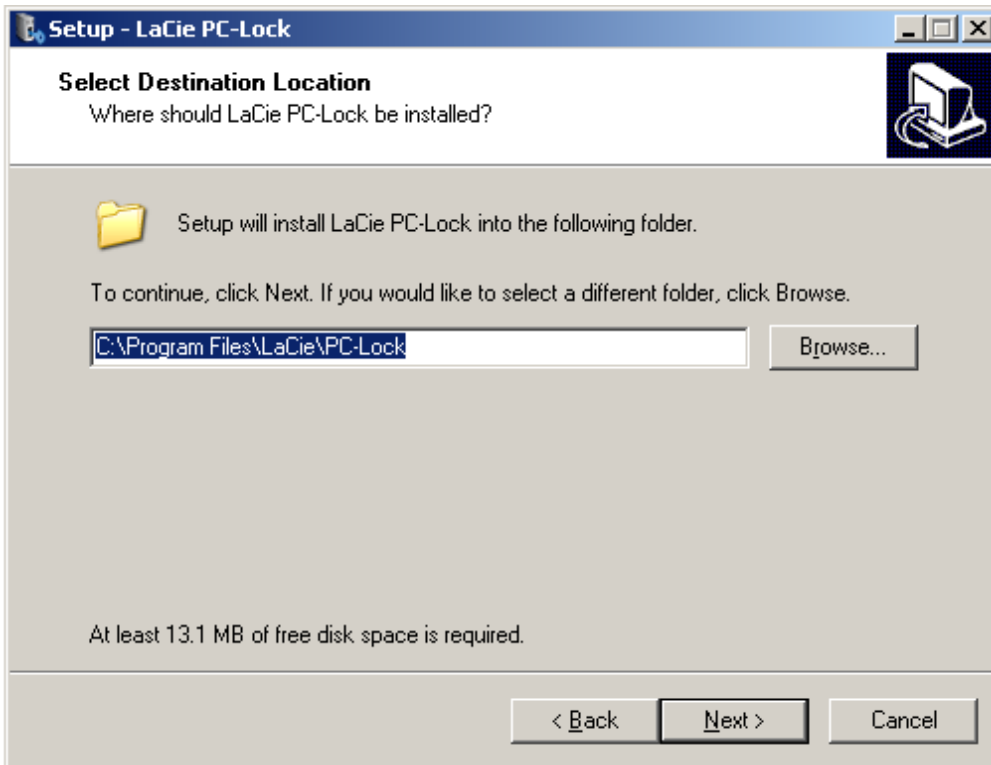
1. If you already have the software, skip to step 3. Otherwise, download the software from the LaCie [website](#).
2. Navigate to your downloads folder.
3. Double-click the LaCie PC Lock Setup exe file.



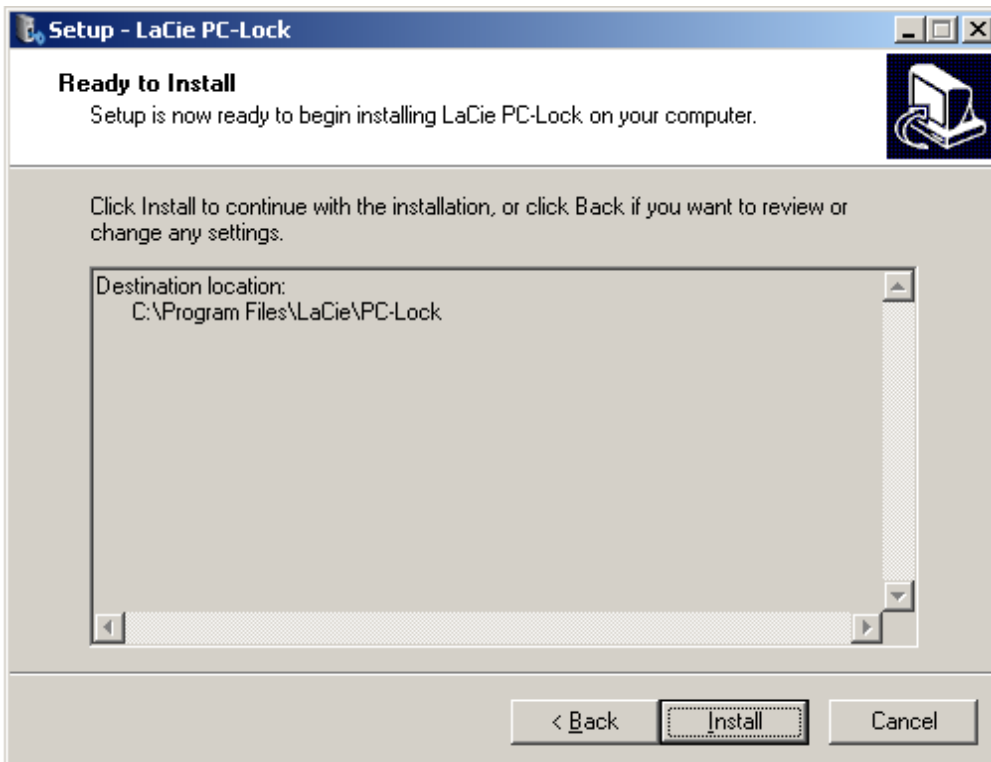
4. In the next screen, click **Next**.



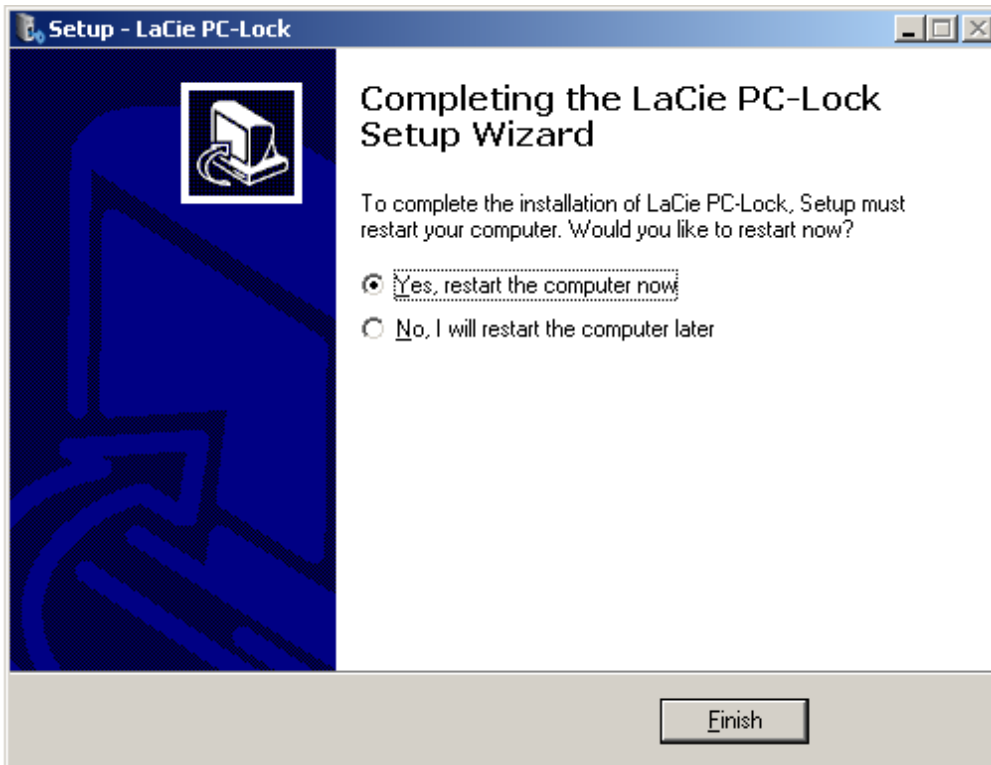
5. In the next screen, agree to the software license in order to continue.
6. In the next screen, choose where you wish to install the software, and click **Next**.



7. In the next screen, click **Install**.



8. In the next screen, select **Yes, restart the computer now** and then click **Finish** to reboot your computer.



9. Move on to the next chapter, [Using PC/Mac Lock](#).

Important info: Windows XP users must restart their computer after installation or the software may not function correctly.

USING PC/MAC LOCK

Once you've installed the software as described in [Installation](#), you're ready to use LaCie PC/Mac Lock. Simply register a LaCie USB key with the software, and you can use it to lock your operating system just like you lock your front door.

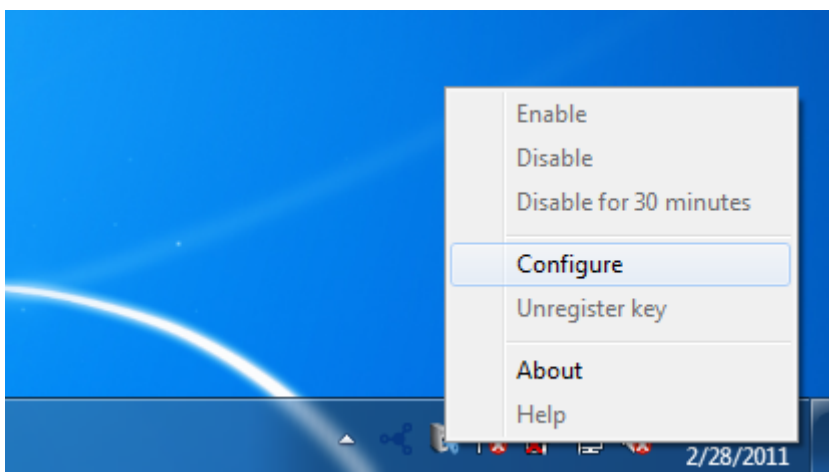
REGISTER KEY

Important info: You must have set and know your operating system's administrator password in order to install the software. See [Assigning an Administrator Password](#) for details.

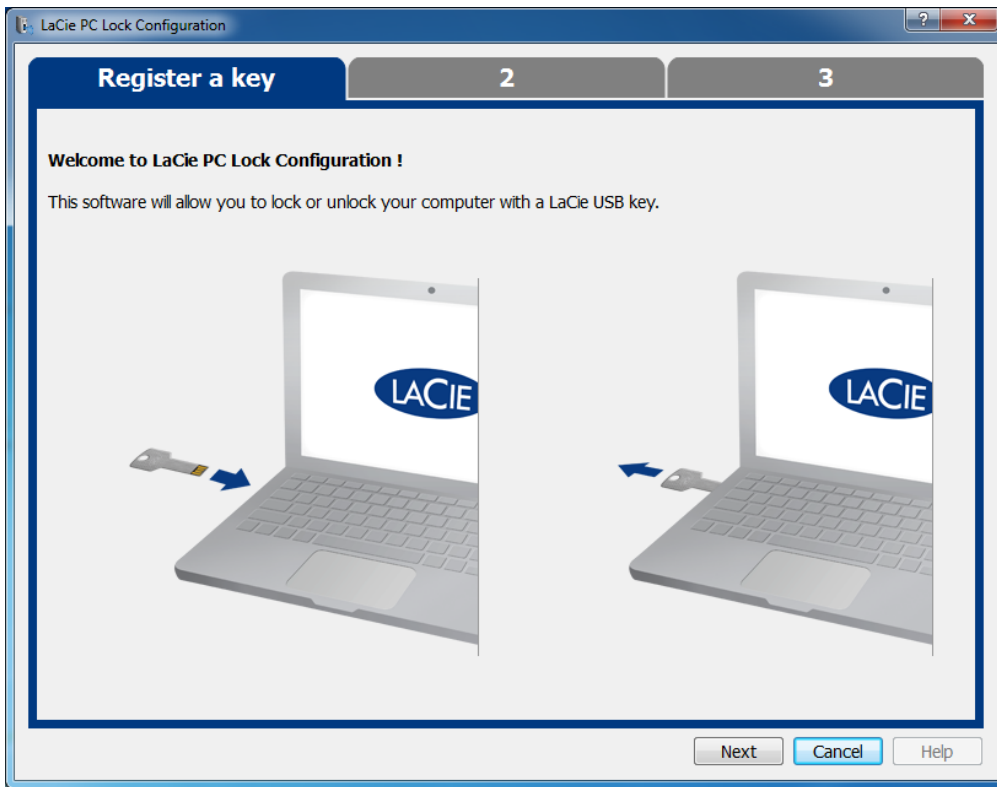
1. Click the LaCie PC/Mac Lock icon in the menu bar (Mac) or right-click the LaCie PC/Mac Lock icon in the system tray (Windows).



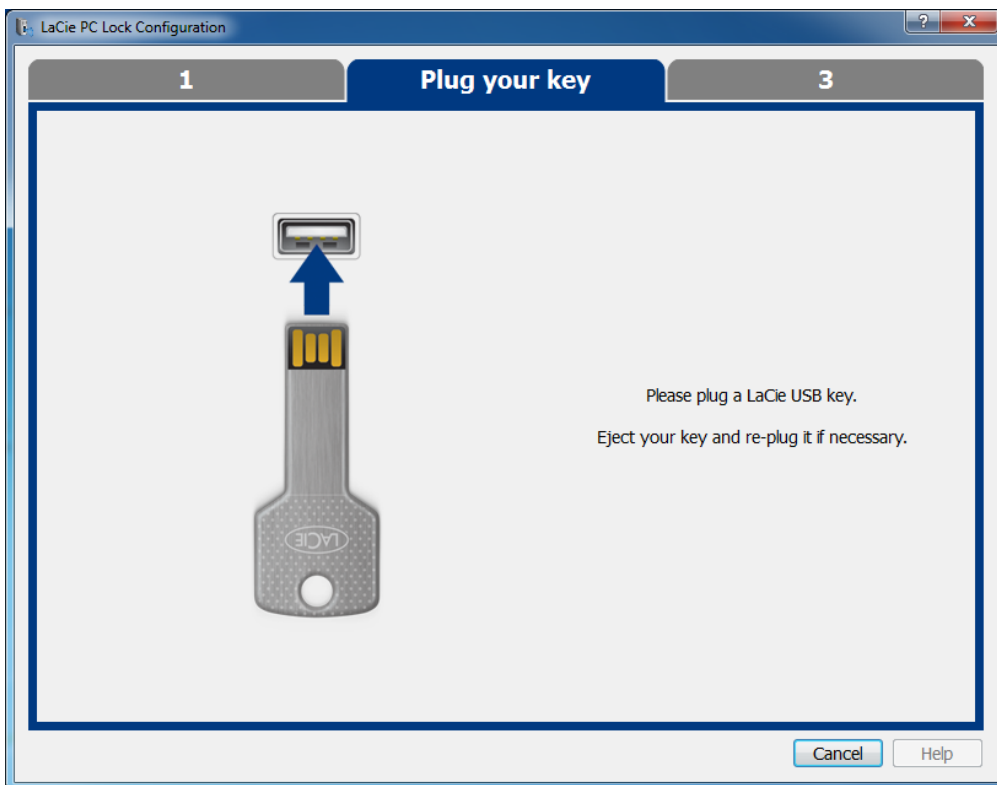
2. In the menu that opens, select **Configure**.



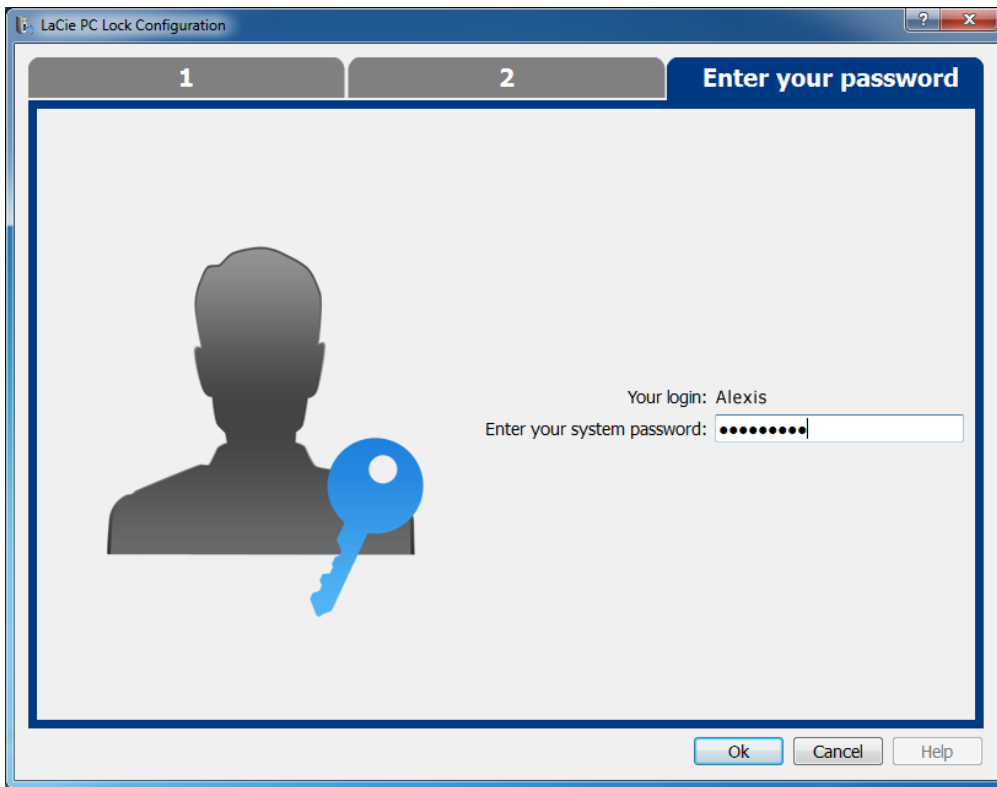
3. The **Register a key** wizard will open. Click **Next**.



4. The next screen instructs you to connect a USB key in order to register it with the software. If the key is already connected, dismount it as described in [Unmounting Your USB Key](#). Then reconnect it.



5. In the next screen, type your operating system administrator password (see [Assigning an Administrator Password](#) for details).



Mac users need to type their admin username and password again in order to finish configuration.



6. Once the password is accepted, configuration is complete.

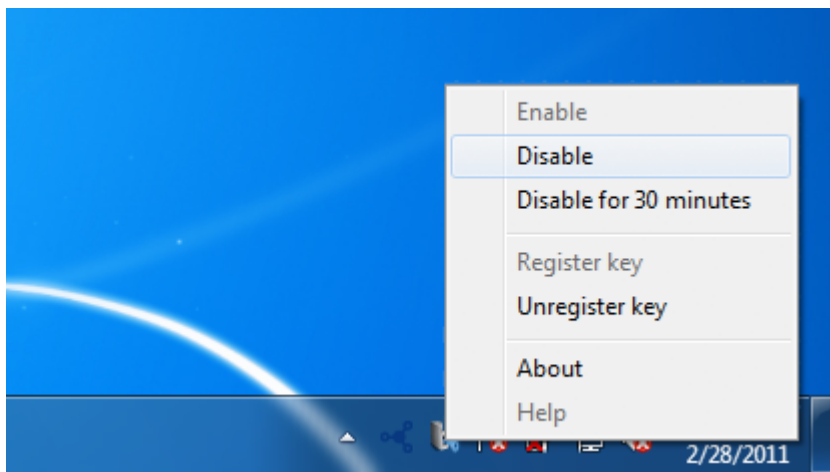
LOCK AND UNLOCK

Once you've configured a key, locking or unlocking your operating system is as easy as connecting or disconnecting the USB key.

Please note that you should properly unmount your key as described in [Unmounting Your USB Key](#) in order to avoid damaging its file system.

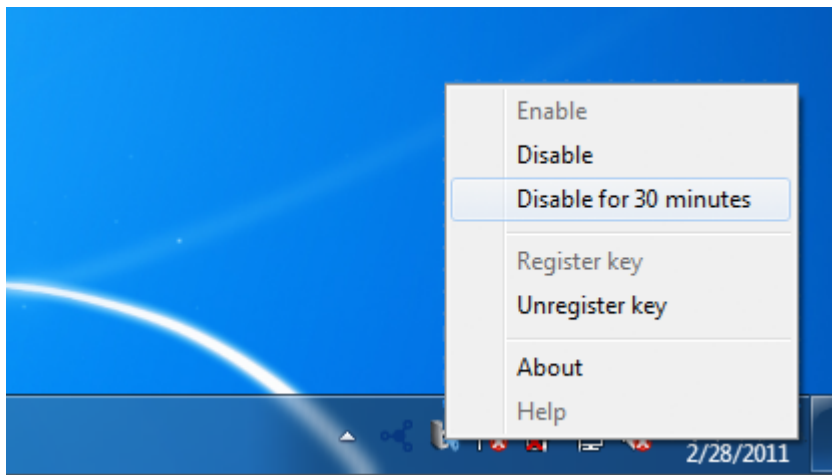
DISABLE OR ENABLE PC/MAC LOCK

To disable or enable the software, select **Disable** or **Enable** in the PC/Mac Lock menu. If you've disabled the software, connecting or disconnecting the USB key will subsequently have no special effect until the software is enabled.



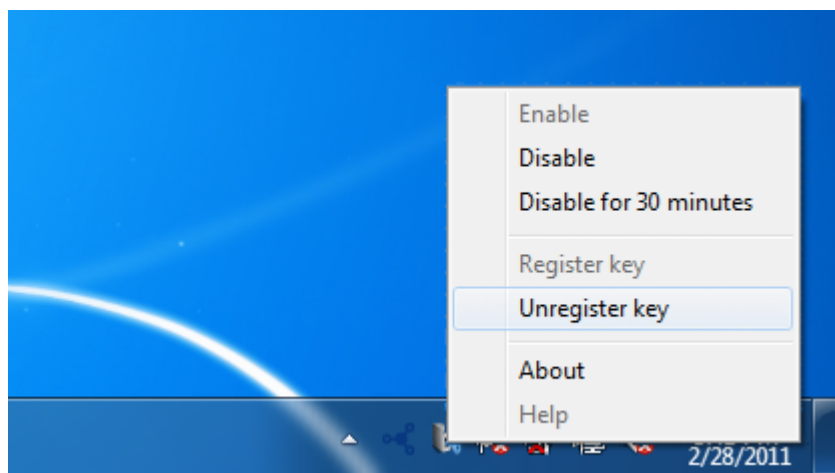
TEMPORARILY DISABLE PC/MAC LOCK

In certain situations, you may wish to temporarily disable the software, such as if you need the USB key or port for another task. To do this, select **Disable for 30 minutes** in the PC/Mac Lock menu.



UNREGISTER A KEY

If you want to register a different key, you first need to unregister the original key. To do this, select **Unregister key** in the PC/Mac Lock menu.



You can then register a new key.

UNMOUNTING YOUR USB KEY

USB, FireWire, Thunderbolt, and eSATA external devices feature “plug & play” connectivity, which means that your LaCie storage can be connected and disconnected while the computer is running. To prevent failures, however, it is important to follow these steps when disconnecting your device.

WINDOWS XP USERS

From the System Tray (located in the lower right-hand side of your screen), click the Eject icon (a small green arrow over a hardware image). A message will appear, listing the devices the Eject icon controls (it should say, “Safely remove...”). Click on the LaCie storage device in this prompt.



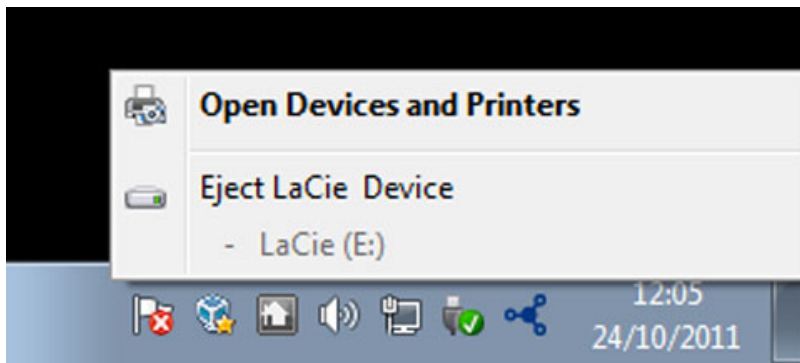
This message will appear: “Safe to Remove Hardware” (or similar). It is now safe to disconnect the device.

WINDOWS VISTA & WINDOWS 7 USERS

From the System Tray (located in the lower right-hand side of your screen) click on the plug icon (note the white check mark inside a green circle).

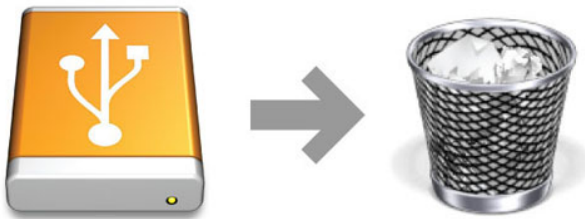


A message will appear, detailing the devices that may be safely unmounted. Select **Eject** for the device you wish to unmount. A message will appear notifying you that it is safe to remove it.



MAC USERS

Drag the storage device icon to the Trash. (The icon pictured below is a generic USB device icon. Your LaCie storage may be represented by an icon that looks like the device itself.)



When the icon disappears from the desktop, the storage device can be disconnected.

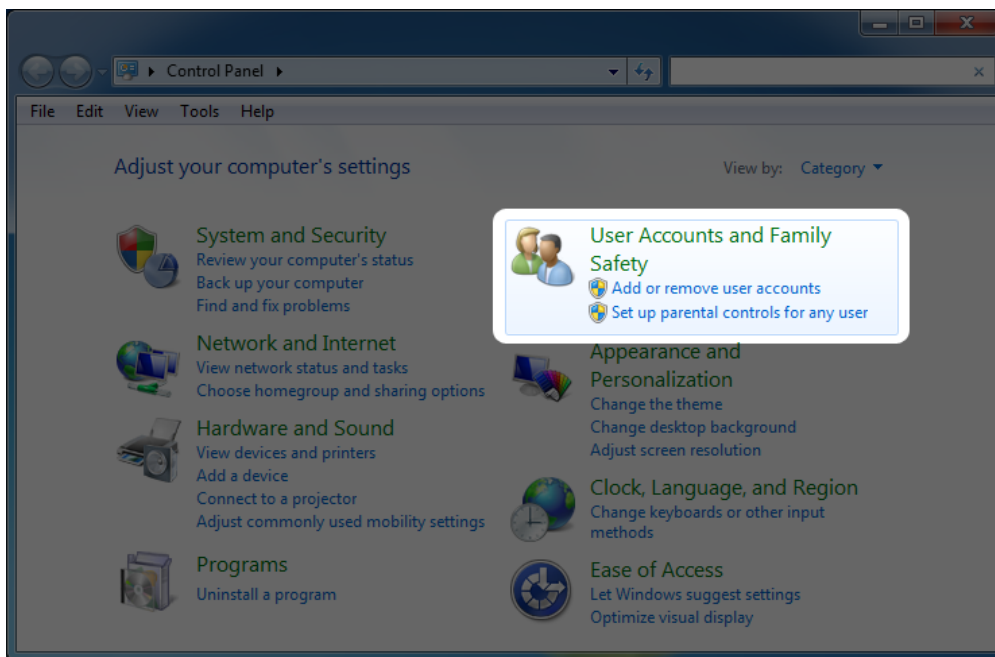
ASSIGNING AN ADMINISTRATOR PASSWORD

MAC USERS

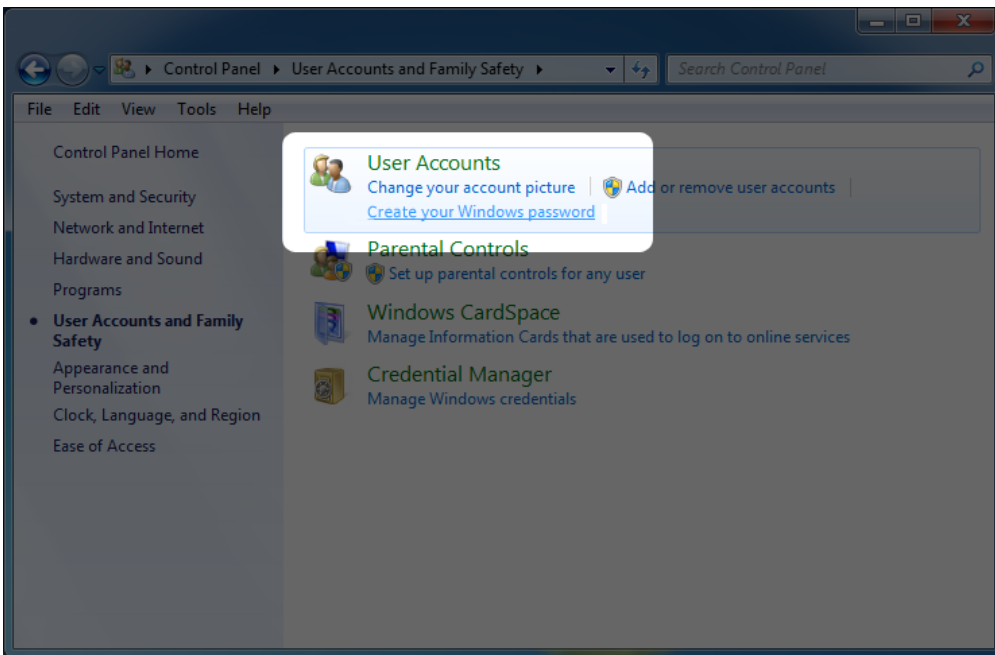
Mac OS X requires an admin password to be created when the operating system is installed. As a result, an admin password has already been assigned so it's not possible to create one for the purposes of this software. If you've forgotten your admin password, you will need your operating system installation DVD to recover it. See [here](#) for details.

WINDOWS 7 AND VISTA USERS

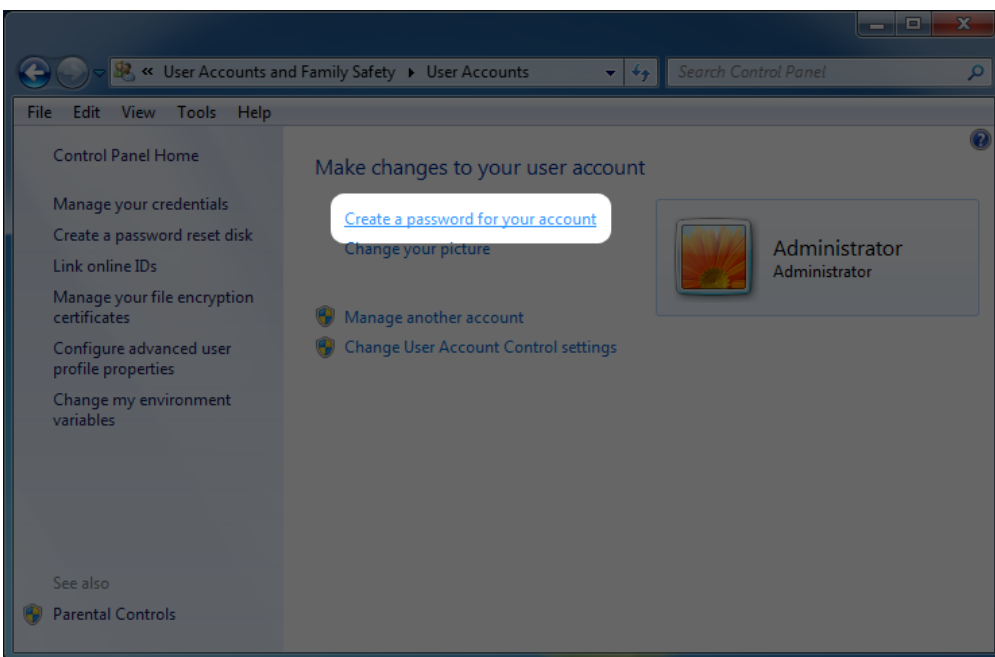
1. Navigate to **Start > Control Panel**.
2. Select **User Accounts and Family Safety**.



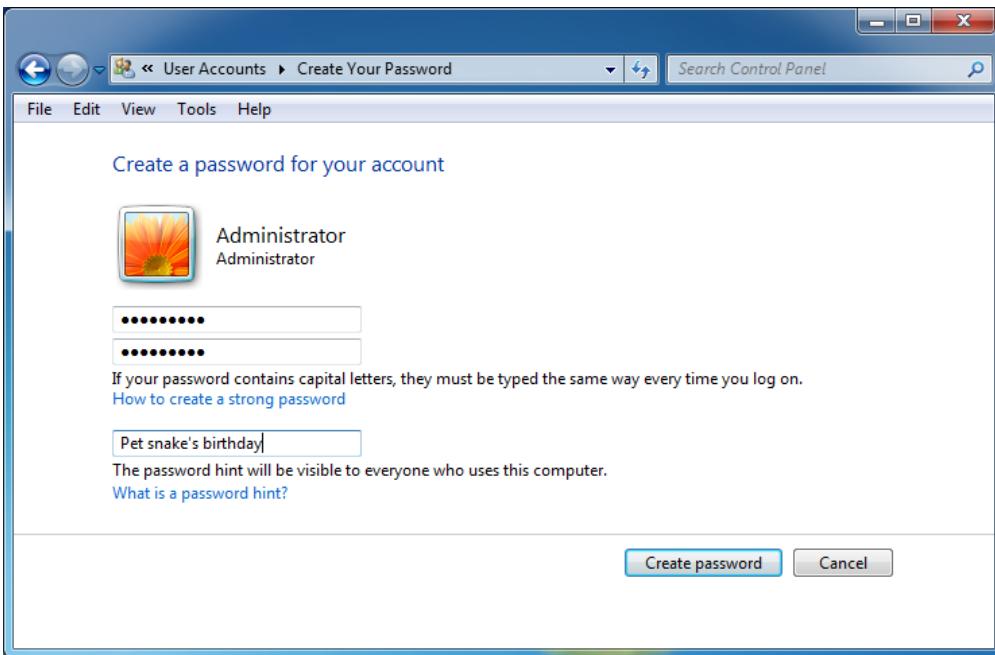
3. Select **Create your Windows password**.



4. Select **Create a password for your account**.

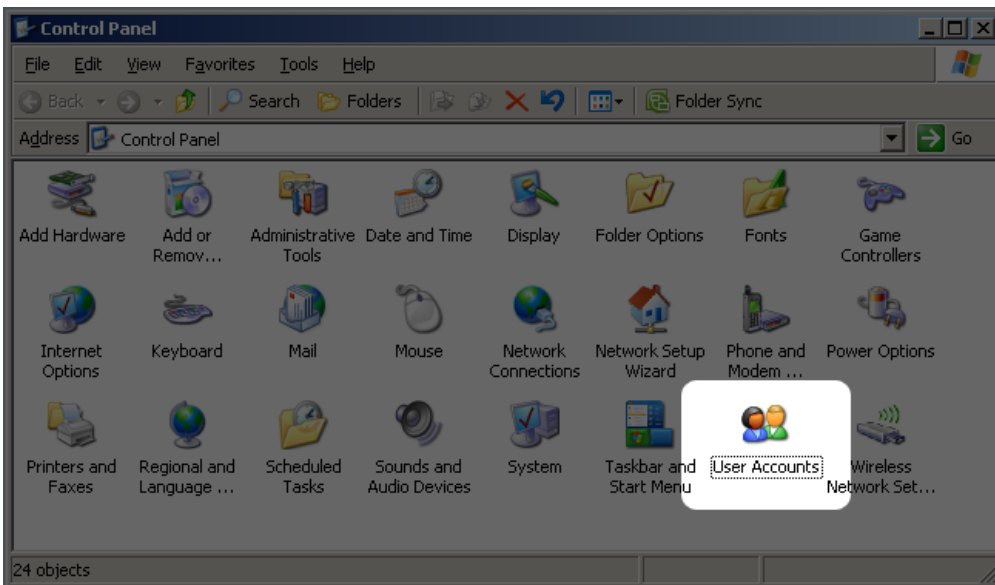


5. Type in your new password, confirm, type a hint to help you remember it, then click **Create password**.

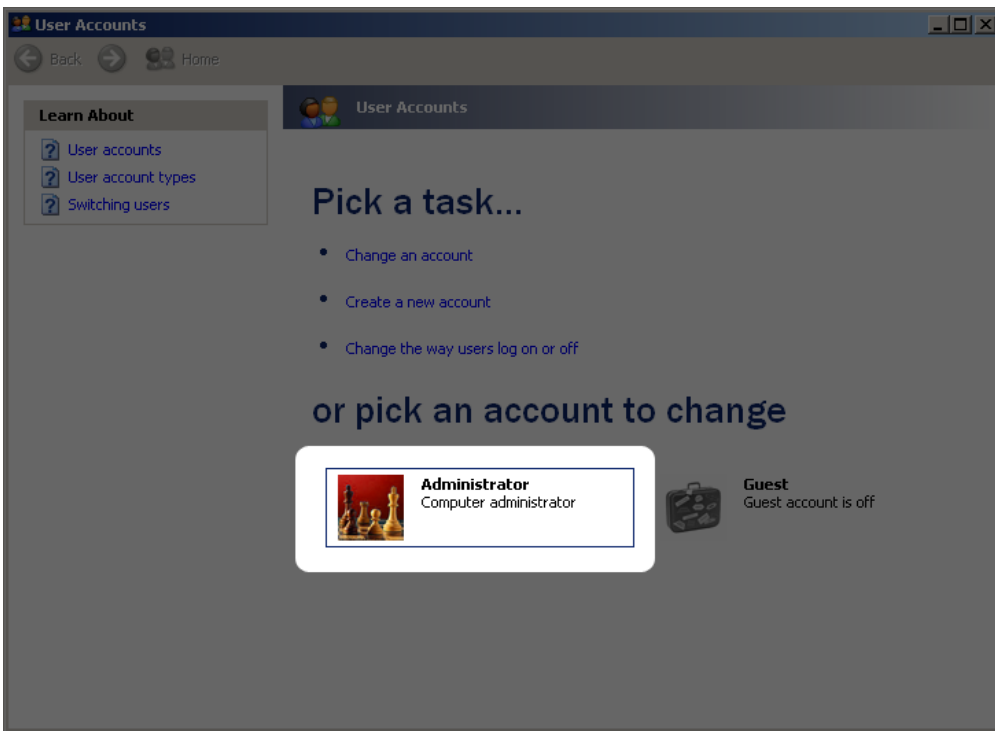


WINDOWS XP USERS

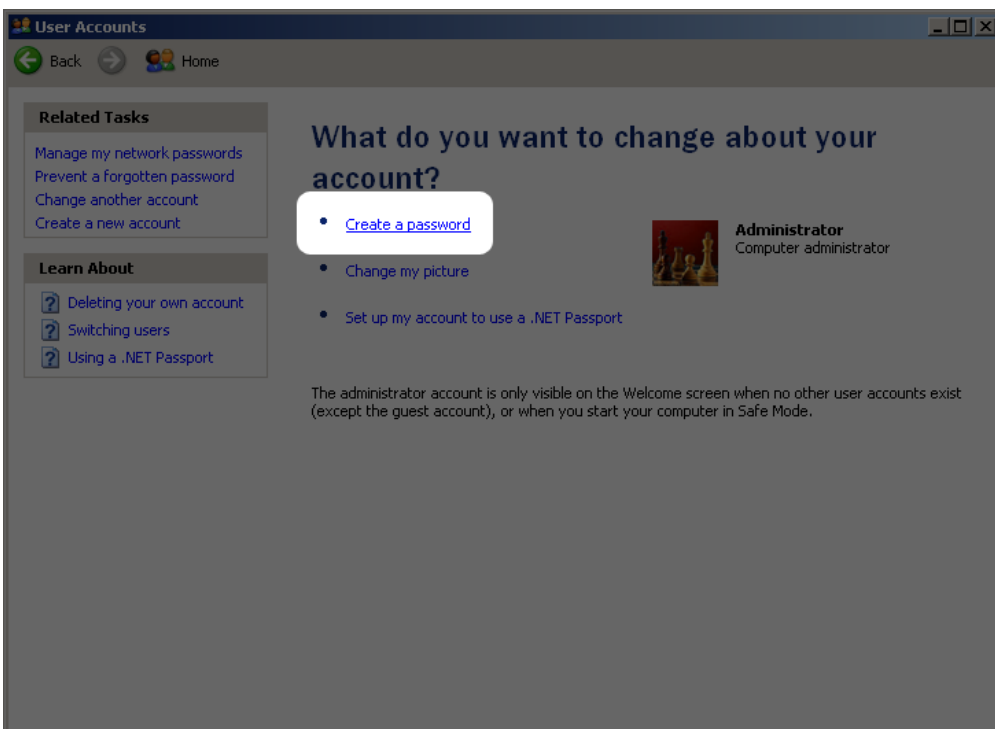
1. Navigate to **Start > Settings Control Panel**.
2. Select **User Accounts**.



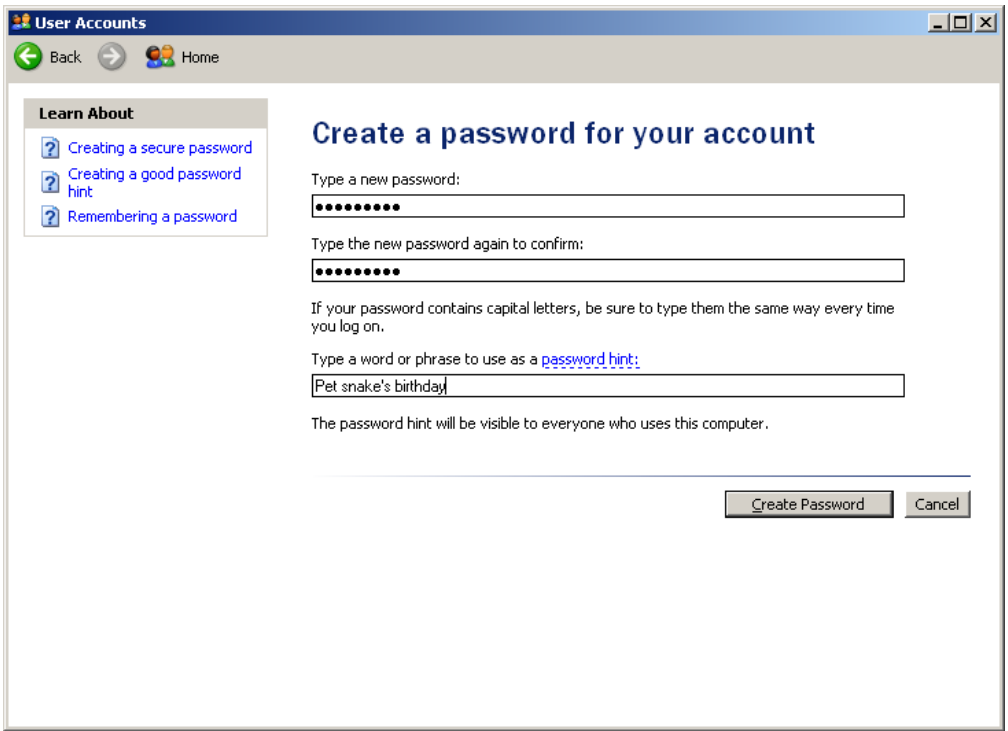
3. Select **Administrator**.



4. Select **Create a password**.



5. Type in your new password, confirm, type a hint to help you remember it, then click **Create password**.



FREQUENTLY ASKED QUESTIONS

Q: Does PC/Mac Lock work on other manufacturers' keys? Can it work with other device types such as LaCie USB/FireWire drives?

A: PC/Mac Lock only recognizes LaCie USB keys (with the exception of the LaCie MosKeyto).

Q: How do I log on to my computer if I have forgotten my key?

A: Simply use your operating system's username and password.

Q: Does using PC/Mac Lock have an impact on key performance or behavior?

A: None whatsoever.

Q: What if I would like to remove the key and remain logged on?

A: It is possible to disable PC/Mac Lock for 30 minutes or permanently with just one click. See [Using PC/Mac Lock](#).

Q: Would formatting the key prevent PC/Mac Lock from working?

A: No, PC/Mac Lock does not rely on software on the key to work.

Q: Is PC/MAC Lock compatible with Linux?

A: No, it is only compatible with Windows XP, Windows Vista, Windows 7, Mac OS X 10.5 and Mac OS X 10.6.
